

linear stair treads

Specifying for light wear or heavy commercial traffic? Move forward with the improved traction and visual appeal of our high-performing linear stair treads.



linear stair treads

rubber and vinyl stair treads

A range of choices in co-extruded performance rubber or vinyl. In more colors to complement your design.

The unique grooved surface not only offers visual appeal but, improved traction.

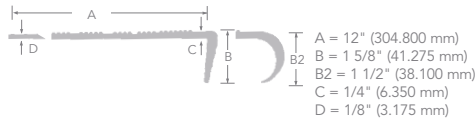
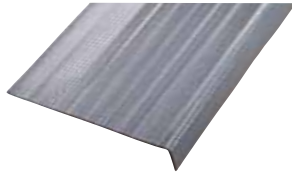
product attributes

- **Commercial 250**
 - Co-extruded thermoplastic rubber – Type TP
- **Commercial 250, 210, 150**
 - Co-extruded thermoplastic vinyl – Type TV
- **25 Sync™ colors**
- **Available in 3', 3½', 4', 5', 6', 8' and 12' lengths**
- **Meets guidelines established by ADA for walking surfaces and ramps**
- **Made in USA**
- **Limited 5-Year Commercial Warranty (epoxy compound required for proper installation)**

linear stair tread profiles

commercial 250 - heavy traffic
(rubber Type TP and vinyl Type TV)
square nose

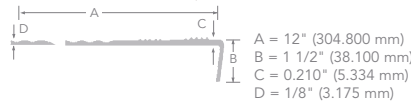
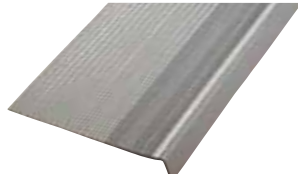
round nose available upon request



- Design: Six-Grip Strip
- Round nose available on request
- Epoxy nose filler required

commercial 210 - normal traffic
(vinyl Type TV only)
square nose

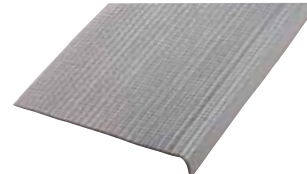
round nose available upon request



- Design: Pyramidal Gripper
- Square Nose only
- Epoxy nose filler required

commercial 150 - light traffic
(vinyl Type TV only)
square nose

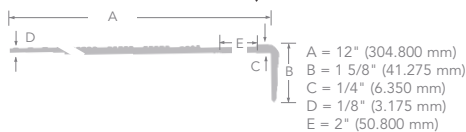
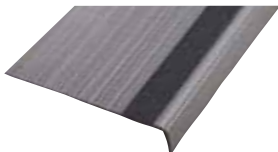
round nose available upon request



- Design: Full Depth Corrugation
- Round nose available on request
- Epoxy nose filler required

visually impaired safety tread

(rubber Type TP)



- Design: 2" (50.800 mm) Abrasive Strip
- Epoxy nose filler required



All Visually Impaired stair treads meet the California Disabled Access regulations Title 24 for the visually impaired when used with contrasting strip color.



riser – rubber Type TP or vinyl Type TV

thickness – .085"

lengths – 50' coil rolls

height – 7" coved

stringer – rubber Type TP or vinyl Type TV

thickness – .085"

lengths – 50' coil rolls

height – 10"



Reference page 56 for color choices.
Reference page 50 for technical information.

linear stair nosing

Outstanding performance, designed to bear the brunt of foot traffic. A great look that lasts.



linear stair nosing

rubber nosings

Extending the life of the stair floor covering for years to come.

product attributes

- Thermoplastic rubber – Type TP
- 25 Sync™ colors
- Meets guidelines established by ADA for walking surfaces and ramps
 - section 4.5.2 (change in level)
 - section 4.5.3 (carpet and edge trim compliance)
- Made in USA
- Limited 1-Year Commercial Warranty (epoxy compound required for proper installation)

product	profile	description	packaging
510 Top-Set Squared		Covers leading edge of step. May be used over vinyl and sheet goods.	20-12' secs. Per carton (240 feet)
511 Top-Set Rounded		Covers leading edge of step. May be used over resilient tile and sheet goods.	20-12' secs. Per carton (240 feet)
557 Visual Safety		Contrasting insert for Visually Impaired. Accepts 1/4" (6.350 mm) with lip, 3/8" (9.525mm) without lip	6-12' secs. Per carton (72 feet)
560 Double Butt Carpet Stair		Nosing for square, nose step. Double butt edge; smooth surface accommodates step and riser. For 1/4" carpet installations.	10-12' secs. Per carton (120 feet)
565 Double Undercut Carpet Stair		For 1/4" and 5/16" carpet. Accommodates step and riser; with ribbed surface.	10-12' secs. Per carton (120 feet)
570 Superior Carpet Stair		Friction-Grip nosing for use when only step is covered. Undercut for 1/4" and 5/16" carpet.	10-12' secs. Per carton (120 feet)
575 Overlap Stair		Nosing with deep grooves and overlap lip. Accepts material to 1/8".	10-12' secs. Per carton (120 feet)
580 Commercial Step		Square step nosing for 1/8" material. Ribbed surface.	10-12' secs. Per carton (120 feet)



Reference page 56 for color choices.
Reference page 55 for technical information.

